

STANDARD
PREMIUM FOAM



LIFT TOP
STORAGE

FUNCTION

Manual recline with pull latch
Power recline with toggle switch
Power Recline with LED Cupholder switch when
LED option is selected

OPTIONS

Antique Brass Cup Holder
Stainless Steel Cup Holder
Black LED Cup Holder
Metal Table With Grommet
Black Table With Grommet
Grommet Only

ACCESSORIES

HTS Sectional Connectors
Wine Glass Holder
Tablet Holder
Battery Y-Cable
Battery Pack
LED Flex Light
Extra Metal Tray Table
Extra Black Tray Table

SEATING COMFORT

Semi-attached back cushions with fibre filling
Full, chaise-style seat cushions with high-resiliency, high density
foam core in polyester wrap
Back Suspension: Sinuous springs to provide premium comfort and
support.
Seat Suspension: Heavy gauge sinuous springs, engineered to
provide premium comfort and endurance.

FRAME

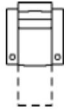
All Frames Are
constructed from
engineered wood
products, hardwood or
softwood; joints are
pinned and glued for
uniformity and
strength.

COVERS

Leather
Fabric

Zenlia Home Store

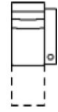
Item # HM-4195-2EL-43



1R Recliner Manual
1E Recliner Power
 37 x 39 x 44"
 92 x 99 x 111 cm
 IA: 24" / 60 cm



2R LHF Manual Recliner
2E LHF Power Recliner
 31 x 39 x 44"
 77 x 99 x 111 cm



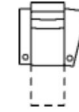
3R RHF Manual Recliner
3E RHF Power Recliner
 31 x 39 x 44"
 77 x 99 x 111 cm



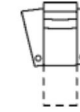
8R Armless Manual Recliner
8E Armless Power Recliner
 24 x 39 x 44"
 61 x 99 x 111 cm



4R Armless Loveseat Manual Recliner
4E Armless Loveseat Power Recliner
 48 x 39 x 44"
 121 x 99 x 111 cm



5R LHF Manual Recliner w/ RHF Wedge Arm
5E LHF Power Recliner w/ RHF Wedge Arm
 42 x 39 x 44"
 106 x 99 x 111 cm
 IA: 24" / 60 cm



6R RHF Manual Recliner w/ LHF Wedge Arm
6E RHF Power Recliner w/ LHF Wedge Arm
 42 x 39 x 44"
 106 x 99 x 111 cm
 IA: 24" / 60 cm

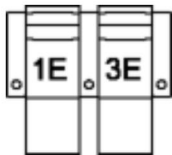


7R RHF Wedge Arm Manual Recliner
7E RHF Wedge Arm Power Recliner
 36 x 39 x 44"
 91 x 99 x 111 cm

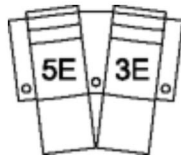


9R LHF Wedge Arm Manual Recliner
9E LHF Wedge Arm Power Recliner
 36 x 39 x 44"
 91 x 99 x 111 cm

POPULAR CONFIGURATIONS



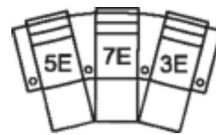
1E/3E
 66 x 67"
 168 x 171 cm



5E/3E
 74 x 69"
 188 x 176 cm



1E/3E/3E
 96 x 39"
 244 x 100 cm



5E/7E/3E
 112 x 72"
 285 x 183 cm

SKU 4R/4E and 8R/8E are intended to only be used adjacent to skus with arms. If connected to an armless side, there could be gaps.

DIMENSIONS

Seat Depth: 21" / 54 cm
 Seat Height: 21" / 52 cm
 Arm Depth: 31" / 80 cm
 Arm Height: 27" / 68 cm
 Reclined Depth: 67" / 169 cm

Dimensions shown as Width x Depth x Height.

Dimensions are correct at the time of printing and are subject to change without notice. Actual measurements for each item may vary from what is shown here. Please allow up to a +/- 1 inch difference. Availability may vary by region.